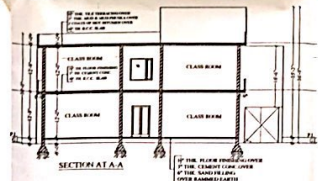
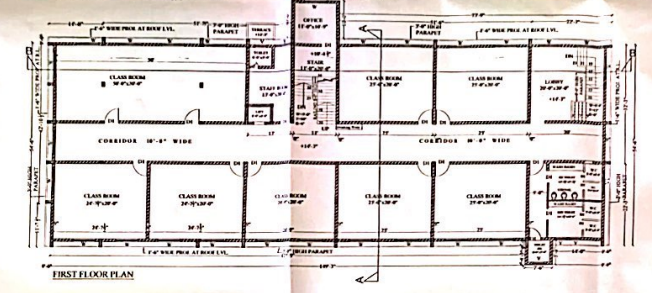
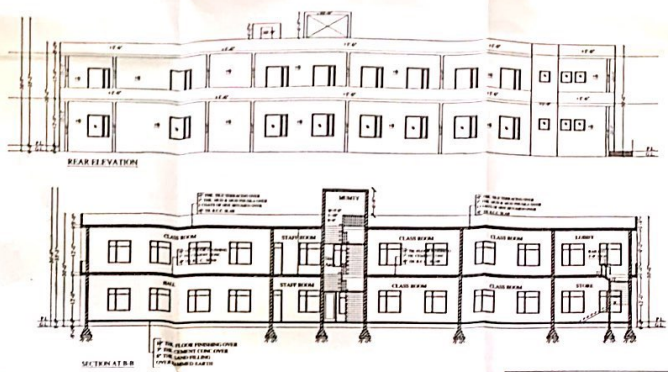
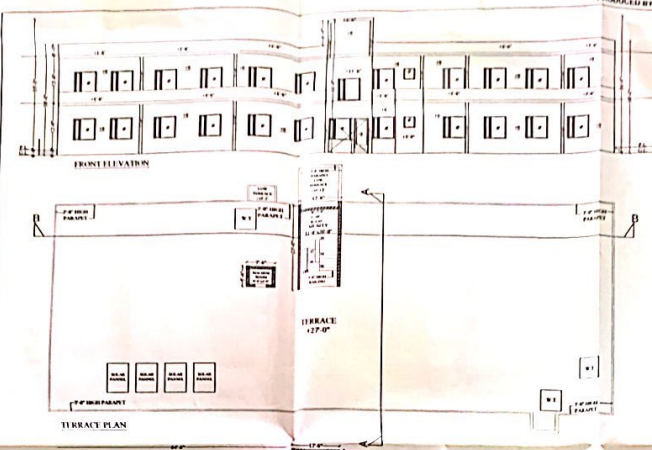


PRODUCED BY AN AUTODESK EDUCATIONAL PRODUCT

8/11/18

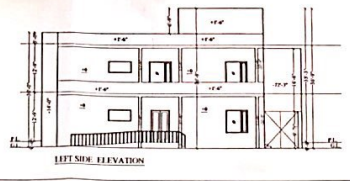
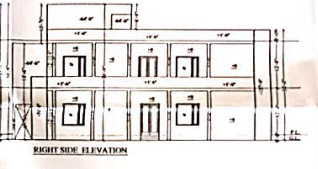
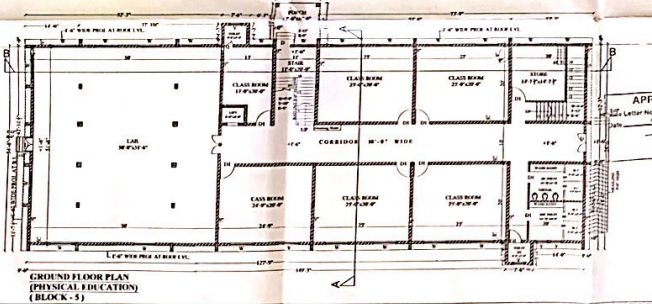


EXISTING BUILDING PLAN OF BLOCK NO-5G1/JT, TERRACE ELEVATION, SECTION FOR COLONEL COLLEGE OF P.H.Y. (A) CHHRAI KALAN, TEIL LEHRA, DISTRICT SANGRUR, RIN BY- COLONEL BANSARCHI & EDUCATION SOCIETY (REGD.)

SHEET TITLE: DETAIL OF BLOCK 5 (CIRCS IN 2016)

SCHEDULE OF JOINTS

TYPE	SIZE	CELL	R.F.
D1	5'-0" X 4'-0"	10	8'-0"
D2	5'-0" X 4'-0"	10	8'-0"
D3	2'-0" X 4'-0"	10	8'-0"
W	6'-0" X 8'-0"	2'-0"	8'-0"
V	5'-0" X 2'-0"	6'-0"	8'-0"



DRAWING NO. 05/08. BLOCK NO-5
SCALE: 1/8" = 1'-0"

NOTE -
COPY RIGHT RESERVED
REGD NO C.A./2007/40595
GB GROUP
Architects
Engineers, Interior Designer,
Landscape Designer,
Vanita Shilpa shastra Regd Valuers
Real Estate Project Consultant
Email - gbarchitects@gmail.com
mob - 98140-37183, 98764-15263
36, Rose Garden Market, Patna
SCO-34 New Leela Eshwan

PRODUCED BY AN AUTODESK EDUCATIONAL PRODUCT